

HT-LM-2510M Brief User Manual

Part One: Specifications

LED Matrix Moving Head Light 25x10W

--- Pan & Tilt Unlimited



Order Code: HT-LM-2510M

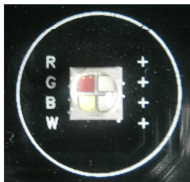
Specifications:

Power supply: 90-240V, 50/60Hz

Power consumption: 400W



Light source: 25pcs 12W RGBW 4IN1 LED.
average life 50,000Hours



Channel: 19/29/117 CH

Control:DMX/Master-slave/Auto/Sound actived

Pan:Unlimited+16 bit fine

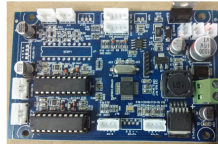
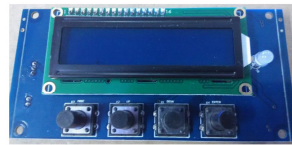
Tilt: Unlimited+16 bit fine

Beam Angle:7



Dimmer: 0-100% linear dimming

Strobe: 0-25Hz



Fixture Dimension: 31*40*51cm

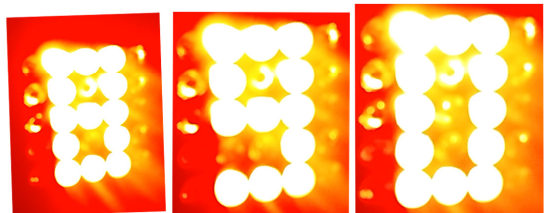
Package: 1pcs/CTN

Packing Dimension:40*51*56cm

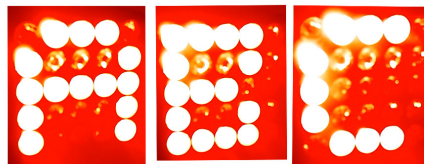
N.W.: 13.8KG G.W.:15.5KG

Effect Pictures:

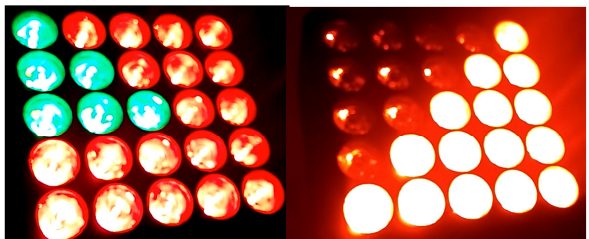
1. Figures



2. Letters



3. Other Shape:



Part Two: Display Menu

1. Address Set
2. Work Mode: DMX512, Slow (slow auto mode), Fast(fast auto mode), Sound and Slave Optional
3. Invert PAN
4. Invert TILT
5. Display Set: Display on off setting
6. Channel Mode Set: 19CH Mode, 29CH Mode, 117CH Mode
7. Restore Factory Settings
8. Reset
9. PAN/TILT Calibration: Pan/Tilt initial position setting

Press MENU for continuous 5s, use UP and DOWN to set the Pan/Tilt initial position.
Press ENTER to confirm and menu out.

Part Three: DMX Channels

19CH	29CH	117CH	Function	DMX value	Description
1	1	1	Pan	0~255	0~540 degree
2	2	2	Pan Unlimited	0~55	No Function
				56~155	Unlimited Pan clockwise rotation from slow to fast
				156~255	Unlimited Pan anticlockwise rotation from slow to fast
	3	3	Pan Fine	0~255	16bit
3	4	4	Tilt	0~255	0~270 degree
4	5	5	Tilt Unlimited	0~55	No Function
				56~155	Unlimited Tilt clockwise rotation from slow to fast
				156~255	Unlimited Tilt anticlockwise rotation from slow to fast
	6	6	Tilt Fine	0~255	16bit
5	7	7	Pan/Tilt Speed	0~255	From fast to slow
6	8	8	Dimmer	0~255	From dark to bright
7	9	9	Strobe	0~3	No Function
				4~95	From slow to fast (1HZ~25HZ)
				96~176	Random Strobe
				177~255	Flash Strobe
8	10	10	Red 1	0~255	From dark to bright
9	11	11	Green 1	0~255	From dark to bright
10	12	12	Blue 1	0~255	From dark to bright
11	13	13	White 1	0~255	From dark to bright
	14	14	Red 2	0~255	From dark to bright
	15	15	Green 2	0~255	From dark to bright
	16	16	Blue 2	0~255	From dark to bright
	17	17	White 2	0~255	From dark to bright
	18	18	Red 3	0~255	From dark to bright
	19	19	Green 3	0~255	From dark to bright
	20	20	Blue 3	0~255	From dark to bright
	21	21	White 3	0~255	From dark to bright
			
		106	Red 25	0~255	From dark to bright
		107	Green 25	0~255	From dark to bright
		108	Blue 25	0~255	From dark to bright
		109	White 25	0~255	From dark to bright
12	22	110	Figure effect	0~8	0
				9~17	1
				18~26	2
				27~35	3
				36~44	4
				45~53	5
				54~62	6

				63~71	7
				72~80	8
				81~89	9
				90~98	“+”
				99~107	“~”
				108~116	“×”
				117~125	“÷”
				126~134	“/”
				135~143	“<”
				144~152	“>”
				153~161	Marco 1
				162~170	Marco 2
				171~179	Marco 3
				180~188	Marco 4
				189~197	Marco 5
				198~206	Marco 6
				207~215	Marco 7
				216~224	Marco 8
				225~233	Marco 9
				234~255	flow effect
13	23	111	Letter effect	0~8	A
				9~17	B
				18~26	C
				27~35	D
				36~44	E
				45~53	F
				54~62	G
				63~71	H
				72~80	I
				81~89	J
				90~98	K
				99~107	L
				108~116	M
				117~125	N
				126~134	O
				135~143	P
				144~153	Q
				154~161	R
				162~170	S
				171~179	T
				180~188	U
				189~197	V
				198~206	W
				207~215	X
				216~224	Y

				225~234	Z
				235~255	flow effect
14	24	112	Picture effect	0~8	Picture 1
				9~17	Picture 2
				18~26	Picture 3
				27~35	Picture 4
				36~44	Picture 5
				45~53	Picture 6
				54~62	Picture 7
				63~71	Picture 8
				72~80	Picture 9
				81~89	Picture 10
				90~98	Picture 11
				99~107	Picture 12
				108~116	Picture 13
				117~125	Picture 14
				126~134	Picture 15
				135~143	Picture 16
				144~153	Picture 17
				154~161	Picture 18
				162~170	Picture 19
				171~179	Picture 20
				180~188	Picture 21
				189~197	Picture 22
			198~206	Picture 23	
			207~215	Picture 24	
			216~224	Picture 25	
			225~234	Picture 26	
			235~255	flow effect	
15	25	113	Color Marcos	0~24	Color 1
				25~49	Color 2
				50~74	Color 3
				75~99	Color 4
				100~124	Color 5
				125~149	Color 6
				150~174	Color 7
				175~199	Color 8
				200~224	Color 9
				225~249	Color 10
				250~255	Color 11
16	26	114	Auto effect	0~9	Effect 1
				10~19	Effect 2
				20~29	Effect 3
				30~39	Effect 4
				40~49	Effect 5

				50~59	Effect 6
				60~69	Effect 7
				70~79	Effect 8
				80~89	Effect 9
				90~99	Effect 10
				100~109	Effect 11
				110~119	Effect 12
				120~129	Effect 13
				130~139	Effect 14
				140~149	Effect 15
				150~159	Effect 16
				160~169	Effect 17
				170~179	Effect 18
				180~189	Effect 19
				190~199	Effect 20
				200~209	Effect 21
				210~219	Effect 22
				220~229	Effect 23
				230~239	Effect 24
				240~255	flow effect
17	27	115	Auto effect speed	0~255	From fast to slow
18	28	116	Function	0~49	No Function
				50~74	Work together with CH12,auto program 1
				75~99	Work together with CH13,auto program 2
				100~124	Work together with CH14,auto program 3
				125~149	Work together with CH16,auto program 4
				150~199	Auto
				200~255	Sound
19	29	117	Reset	0~250	No Function
				251~255	Reset